



SSV KIT - сепаратор частиц

| | |
|-------------------|------------------|
| Продукт: | SSV |
| Номер проекта: | 487802422_rev2 |
| Инструкция P / N: | 487802422 |
| Номер редакции: | 2 |
| Дата проверки: | Октябрь 2017 г. |
| Предмет охвачен: | Сепаратор частиц |

УСТАНОВОЧНОЕ ВИДЕО МОЖНО НАЙТИ ПО АДРЕСУ: [HTTPS://WWW.YOUTUBE.COM/WATCH?V=U63LENWHWAW&FEATURE=YOUTU.BE](https://www.youtube.com/watch?v=U63LENWHWAW&feature=youtu.be)

В этом документе могут использоваться следующие символы:

ПРЕДУПРЕЖДЕНИЕ

Указывает на опасную ситуацию, которая, если ее не избежать, может привести к смерти или серьезной травме.

⚠ ОСТОРОЖНО: Указывает на опасную ситуацию, которая, если ее не избежать, может привести к незначительной или средней травме.

УВЕДОМЛЕНИЕ Указывает инструкцию, которая, если не соблюдаться, может серьезно повредить компоненты транспортного средства или другое имущество.

ПРЕДУПРЕЖДЕНИЕ

- По соображениям безопасности этот комплект должен быть установлен уполномоченным дилером BRP.
- Этот комплект не увеличивает максимальную глубину, допускаемую для езды. Обратитесь к руководству оператора для безопасной езды.
- Этот комплект предназначен только для конкретных применимых моделей (авторизованные дилеры BRP подтвердят модель (модели)). Это не рекомендуется для единиц, отличных от тех (тех), для которых оно было продано.
- Если для установки набора требуется шаблон, убедитесь, что шаблон предназначен для масштабирования.
- Необходимо строго соблюдать требования к затяжке торцевого ключа.
- В случае, если удаление запорного устройства (например, блокировка вкладок, самоблокирующийся крепеж и т.д.) требуется при прохождении разборки / сборки, всегда заменить на новую.
- Некоторые компоненты могут быть ГОРЯЧЕЙ. Всегда ждите, пока двигатель не остынет, прежде чем выполнять работу.
- При использовании электроинструментов всегда надевайте ЗАЩИТУ ГЛАЗ И ПРИБЛИЗИТЕЛЬНЫЕ ПЕРЧАТКИ.
- Если не указано иное, двигатель должен быть выключен при выполнении любой операции на автомобиле.
- Всегда помните о частях, которые могут перемещаться, например, колеса, компоненты трансмиссии и т. Д.

ПРЕДУПРЕЖДЕНИЕ

Некоторые важные сведения о безопасности и / или инструкции по эксплуатации, предназначенные для конечного пользователя, могут быть включены в эту инструкцию. Обязательно укажите номер детали комплекта, а также инструкцию по эксплуатации, прилагаемую к этому комплекту для клиента.

Убедитесь, что клиент имеет доступ ко всей информации, необходимой для правильного использования аксессуара.

ПРИМЕЧАНИЕ : ИСПОЛЬЗУЙТЕ МОМЕНТЫ ЗАТЯЖКИ В СЛЕДУЮЩЕЙ ТАБЛИЦЕ, ЕСЛИ НЕ ИСПОЛЬЗУЕТСЯ ИНОЕ УКАЗАН.




| | GRADE | | | |
|-----|--|--|---|--|
| | 5,8 | 8,8 | 10,9 | 12,9 |
| M4 | 1,8 ± 0,2 Н • м (16 фунт - сила ± 2 • В) | 2,8 ± 0,2 Н • м (25 фунт - сила ± 2 • В) | 3,8 ± 0,2 Н • м (34 фунт - сила ± 2 • В) | 4,5 ± 0,5 Н • м (40 фунт - сила ± 4 • В) |
| M5 | 3,3 ± 0,2 Н • м (29 фунт - сила ± 2 • В) | 5 ± 0,5 Н • м (44 фунт - сила ± 4 • В) | 7,8 ± 0,7 Н • м (69 фунт - сила ± 6 • В) | 9 ± 1 Н • м (80 фунт - сила ± 9 • В) |
| M6 | 7,5 ± 1 Н • м (66 фунт - сила ± 9 • В) | 10 ± 2 Н • м (89 фунт - сила ± 18 • В) | 12,8 ± 2,2 Н • м (113 ± 19 фунт - сила • В) | 16 ± 2 Н•m (142 ± 18 lbf•in) |
| M8 | 15.3 ± 1.7 N•m (135 ± 15 lbf•in) | 24.5 ± 3.5 N•m (18 ± 3 lbf•ft) | 31.5 ± 3.5 N•m (23 ± 3 lbf•ft) | 40 ± 5 N•m (30 ± 4 lbf•ft) |
| M10 | 29 ± 3 N•m (21 ± 2 lbf•ft) | 48 ± 6 N•m (35 ± 4 lbf•ft) | 61 ± 9 N•m (45 ± 7 lbf•ft) | 73 ± 7 N•m (54 ± 5 lbf•ft) |
| M12 | 52 ± 6 N•m (38 ± 4 lbf•ft) | 85 ± 10 N•m (63 ± 7 lbf•ft) | 105 ± 15 N•m (77 ± 11 lbf•ft) | 128 ± 17 N•m (94 ± 13 lbf•ft) |
| M14 | 85 ± 10 N•m (63 ± 7 lbf•ft) | 135 ± 15 N•m (100 ± 11 lbf•ft) | 170 ± 20 N•m (125 ± 15 lbf•ft) | 200 ± 25 N•m (148 ± 18 lbf•ft) |
| M16 | 126 ± 14 N•m (93 ± 10 lbf•ft) | 205 ± 25 N•m (151 ± 18 lbf•ft) | 255 ± 30 N•m (188 ± 22 lbf•ft) | 305 ± 35 N•m (225 ± 26 lbf•ft) |
| M18 | 170 ± 20 N•m (125 ± 15 lbf•ft) | 273 ± 32 N•m (201 ± 24 lbf•ft) | 330 ± 25 N•m (243 ± 18 lbf•ft) | 413 ± 47 N•m (305 ± 35 lbf•ft) |

NOTE: For Stainless Steel Fasteners, Use the Torque Numbers listed for 5.8 Grade.

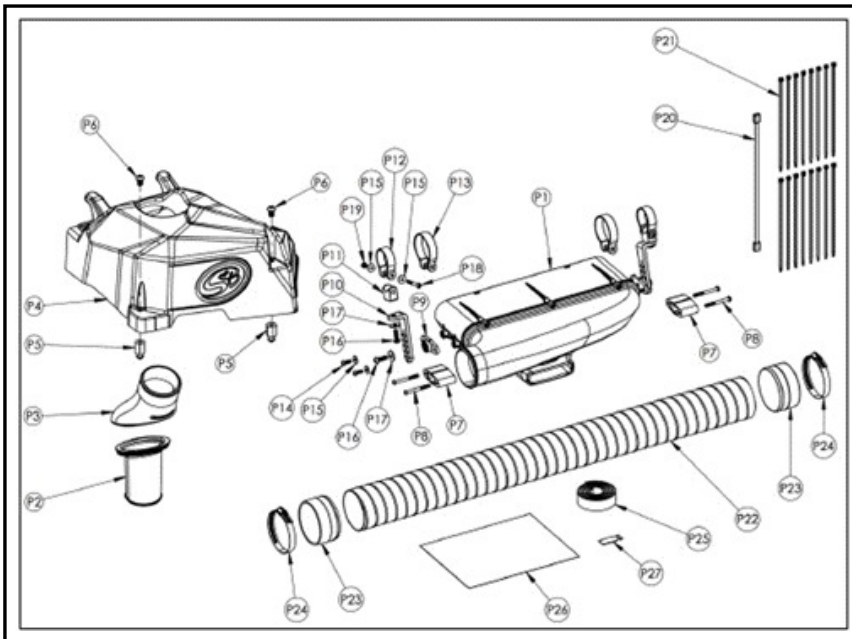
NOTE: The illustrations in this document show typical construction of the different assemblies and may not reproduce the full detail or exact shape of the parts; however, they represent parts that have the same or similar function.

Installation time is approximately 2.0 hours.

ICON LEGEND

| icon | INDICATION |
|---|-------------------------------|
|  | Parts to be discarded |
|  | Parts kept for reinstallation |
|  | Threadlocker |

ITEM IN KIT



| ITEM | DESCRIPTION | QTY |
|------|------------------------|-----|
| P1 | Particle Separator | 1 |
| P2 | Inlet Adapter | 1 |
| P3 | Plenum | 1 |
| P4 | Air Intake Cover | 1 |
| P5 | Push-In Prong | 2 |
| P6 | M10-1.5 x 16 Screw | 2 |
| P7 | Mount Spacer | 2 |
| P8 | M6-1.0 x 60 Screw | 4 |
| P9 | Clamp Adapter | 2 |
| P10 | Clamp L-Bracket | 2 |
| P11 | Clamp Pivot Body | 2 |
| P12 | Clamp Strap 1.85" | 2 |
| P13 | Clamp Strap 2.50" | 2 |
| P14 | M6-1.0 x 18 Screw | 4 |
| P15 | M6 Washer | 8 |
| P16 | M8-1.25 x 25 Screw | 4 |
| P17 | M8 Washer | 4 |
| P18 | M6-1.0 x 50 Screw | 2 |
| P19 | M6 Locknut | 2 |
| P20 | Universal Wire Harness | 1 |
| P21 | Cable Tie | 16 |

| ITEM | DESCRIPTION | QTY |
|------|-----------------|-----|
| P22 | Flexible Duct | 1 |
| P24 | Hose Clamp, #56 | 2 |
| P25 | Velcro Strap | 1 |
| P26 | Instructions | 1 |
| P27 | Threadlocker | 1 |
| P28 | CAN-AM Decal | 1 |

*REVISED BOM (PREVIOUS PARTS)

| ITEM | DESCRIPTION | QTY |
|------|--------------------|-----|
| P29 | Flex Duct End Cuff | 2 |

*REVISED BOM (PREVIOUS PARTS)

| ITEM | DESCRIPTION | QTY |
|------|---|-----|
| P29 | Flex Duct End Cuff | 1 |
| P30 | Flex Duct End Cuff with Seal (Revision) | 1 |

*AFTER STEP 9, FOLLOW THE STEP ACCORDINGLY DEPENDING ON WHICH PARTS ARE IN YOUR KIT.

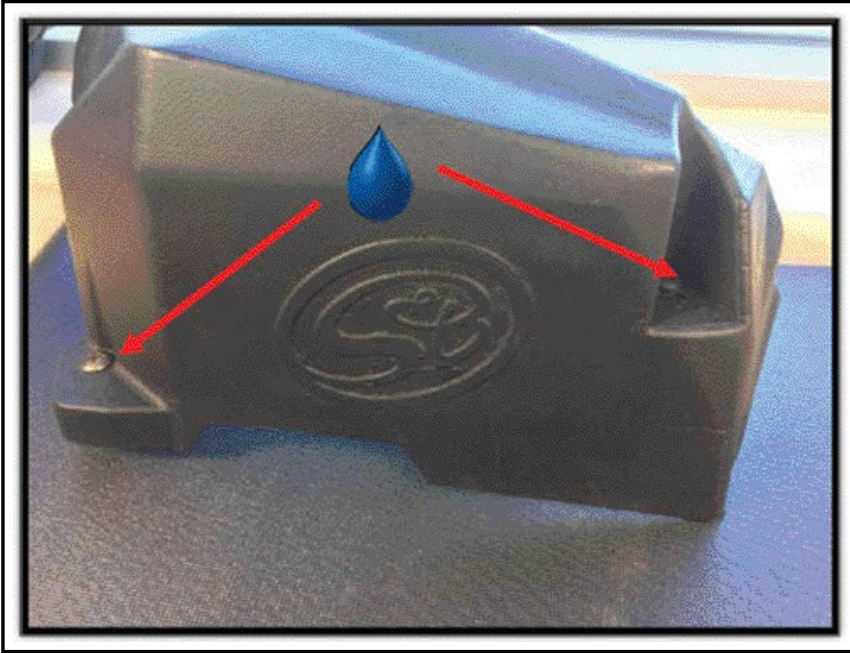
REQUIRED TOOLS

| ITEM | REQUIRED TOOL | USE |
|------|--|--|
| T1 | 4mm Hex Key or Hex Bit Socket | To install the Clamp Adapter onto Particle Separator and in conjunction with T5 to tighten the Clamp Strap |
| T2 | 5mm Hex Key or Hex Bit Socket | To install the Clamp L-Bracket onto the Clamp Adapter and Clamp Pivot Body |
| T3 | 6mm Hex Key or Hex Bit Socket | To be used with T4 to attach the Push In Prong and Screw onto the Air Intake Cover |
| T4 | Crescent Wrench or 3/4" Hex Socket | To be used with T3 to attach the prong and screw onto the plastic cover |
| T5 | 10mm Wrench or Socket | To be used in conjunction with T1 to tighten the Clamp Strap |
| T6 | Ratchet | To be used with T1-T5 if sockets are used |
| T7 | 5/16" Nut Driver or Flat Head Screw Driver | To tighten the #56 Hose Clamp for the Flexible Duct |
| T8 | Razor Blade | To be used to cut the Flexible Duct to length |
| T9 | Mini Bolt Cutter or Heavy Duty Wire Cutter | To be used to cut the Flexible Duct to length |
| T10 | Scissors | To be used to cut the Flexible Duct to length |
| T11 | Torque Wrench | Used to tighten all fasteners to torque specs. |

INSTALLATION

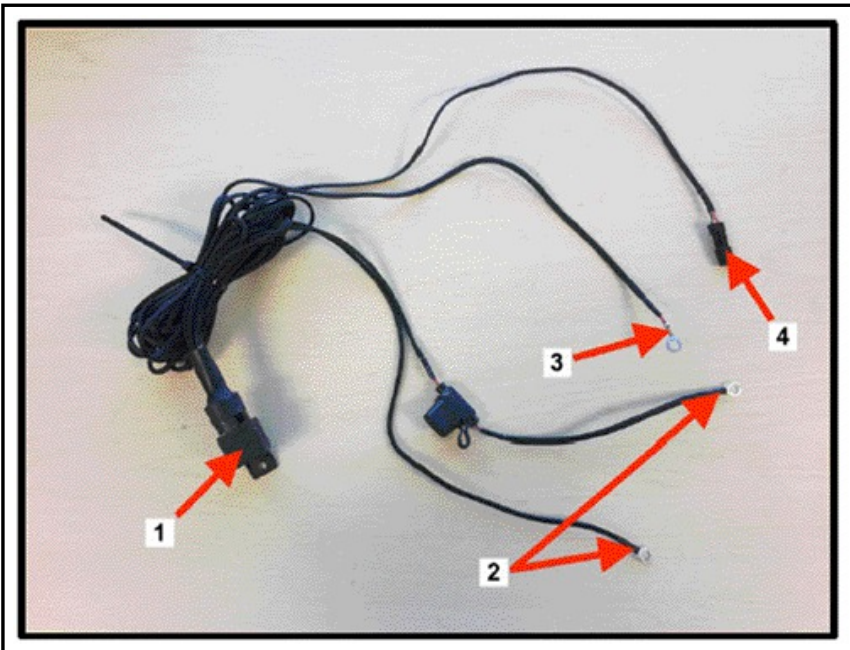
PRE-ASSEMBLY "Air Intake Cover"

1. Install the two Push-In Prongs [P5] onto the Air Intake Cover [P4]. Apply the supplied Threadlocker [P27] to the threads of the two M10-1.5 x 16 Screws [P6]. Use 6mm Hex Key or Hex Bit Socket [T3] and Crescent Wrench or 3/4" Hex Socket [T4] to tighten. The screw should be tightened from the top into the prong.



VEHICLE PREPARATION

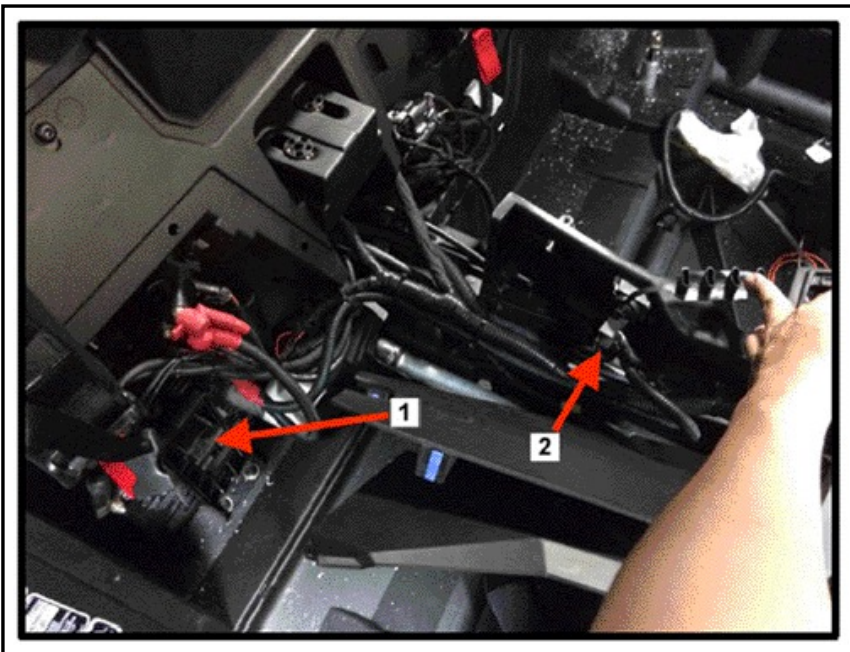
1. Slide and tilt the passenger seat as far as possible towards the front of the vehicle.
2. Familiarize yourself with the Universal Wire Harness [P20].



1. Relay
2. Battery Ring Terminals
3. Accessory Terminal/Hot Wire
4. Fan Connector

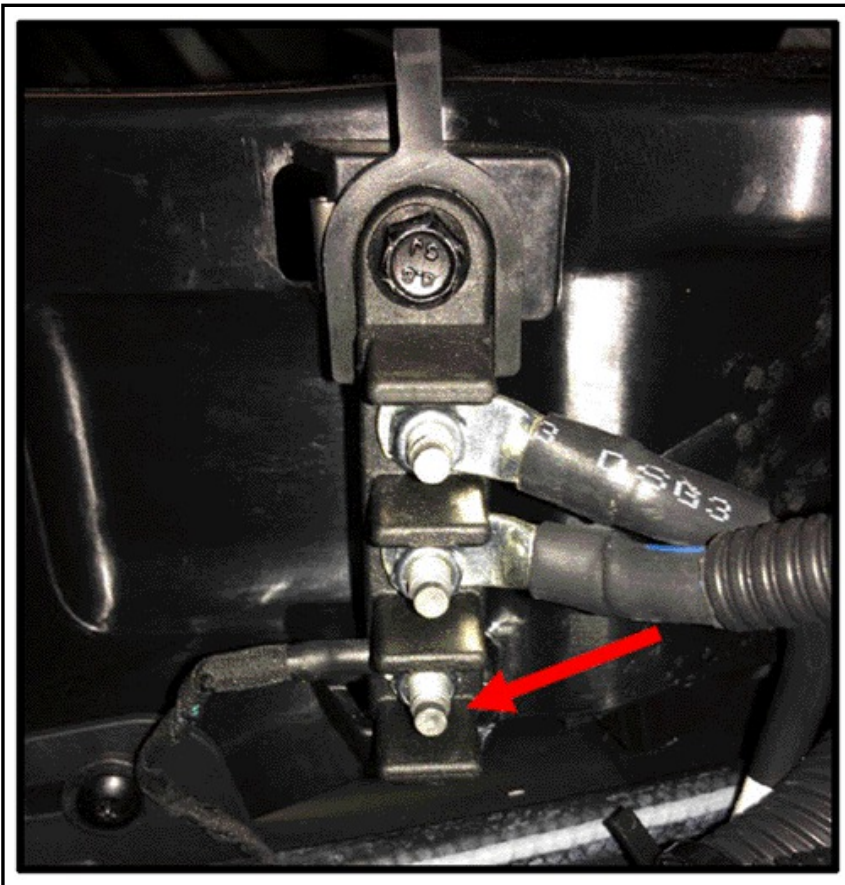
3. Disconnect the battery.

NOTE: Always disconnect the battery before doing any electrical modifications. Disconnect the BLACK negative (-) cable first then disconnect the RED positive (+) cable after.



1. Battery
2. Battery Ring Terminals

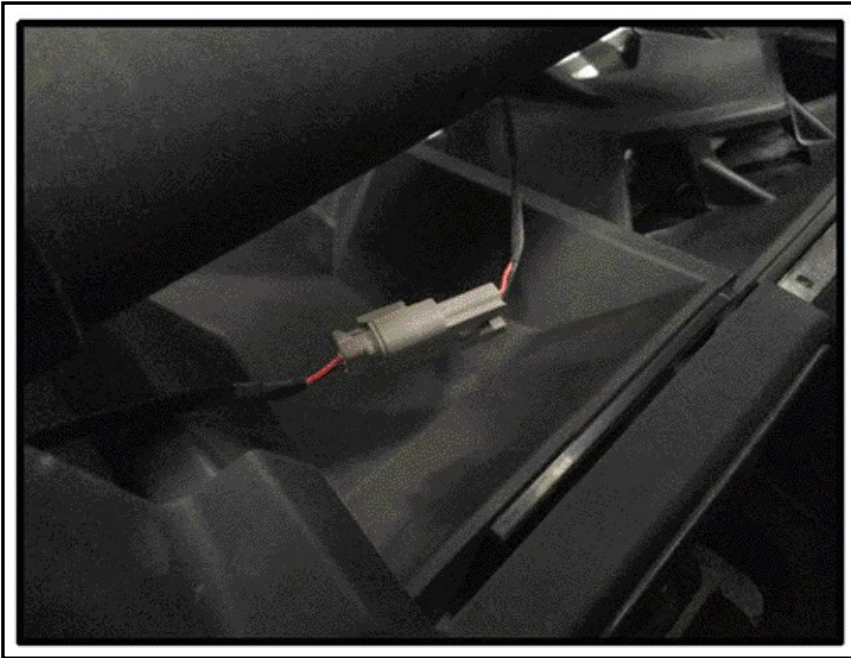
4. Install the Accessory Terminal/Hot Wire from the Universal Wire harness [P20] onto the accessories terminal block using a 10mm Wrench or Socket [T5] underneath the center console. This terminal should only have voltage when the ignition is on or if the engine is running.



5. Install the two battery ring terminals from the Universal Wire Harness [P20] onto the stock battery terminal clamps or the terminal block. The red wire goes to the positive battery terminal, while the black wire goes to the negative battery terminal.

6. Reconnect the battery, starting with the RED positive (+) cable first then the BLACK negative (-) cable.

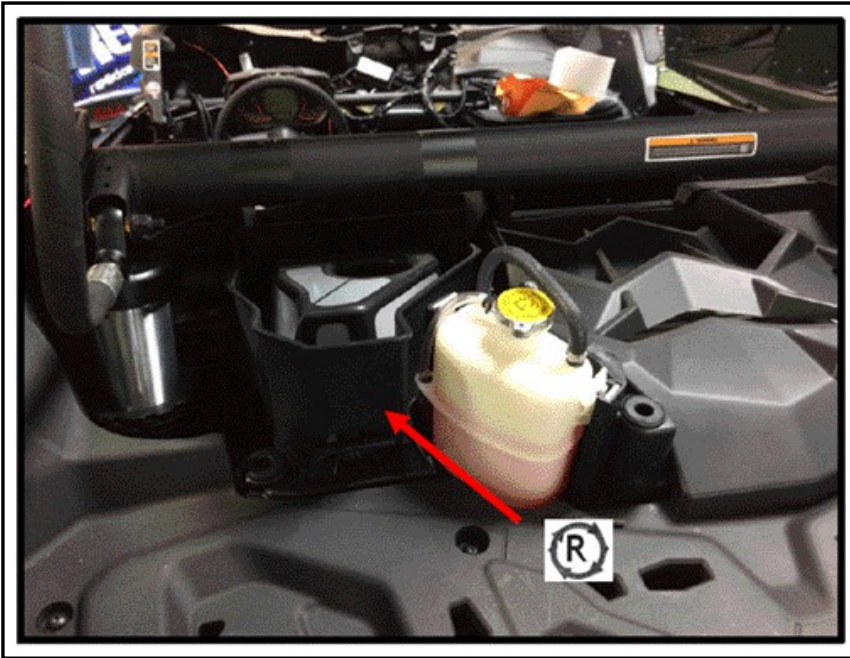
7. To ensure that you have installed the Universal Wire Harness [P20] correctly, connect the fan connector from the Wire Harness to the fan on the Particle Separator [P1]. Turn on the ignition and verify that the Particle Separator turns on. If you hear the Particle Separator fan spinning, and feel air blowing out of the exhaust, you have installed it correctly. Shut off the vehicle, disconnect the fan-connector, then proceed to the next step.



8. Lift up and remove the stock Air Intake Cover from the vehicle. After removing the stock cover, make sure the grommets didn't come off with the cover or fall out of place.



9. Remove the CVT prefilter. Pull on the latch to release the tab and lift up and out.



10. Install the Plenum [P3] onto the Inlet Adapter [P2]. The tab on the plenum must sit in the notch on the rubber inlet adapter for proper alignment.

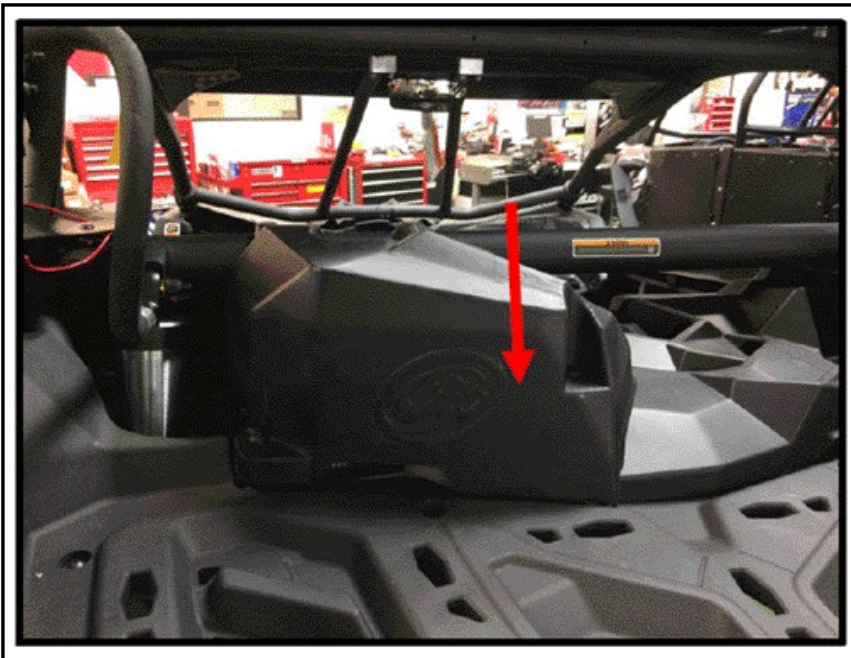


11. With the Inlet Adapter [P2] attached, slide the assembly into the CVT prefilter. The Plenum must be facing in the direction as shown in the picture below.



12. Reinstall the CVT prefilter. When reinstalling, make sure that the tabs go into the slots on the back of the radiator support and are fully inserted. Press down on the part until it snaps into place.

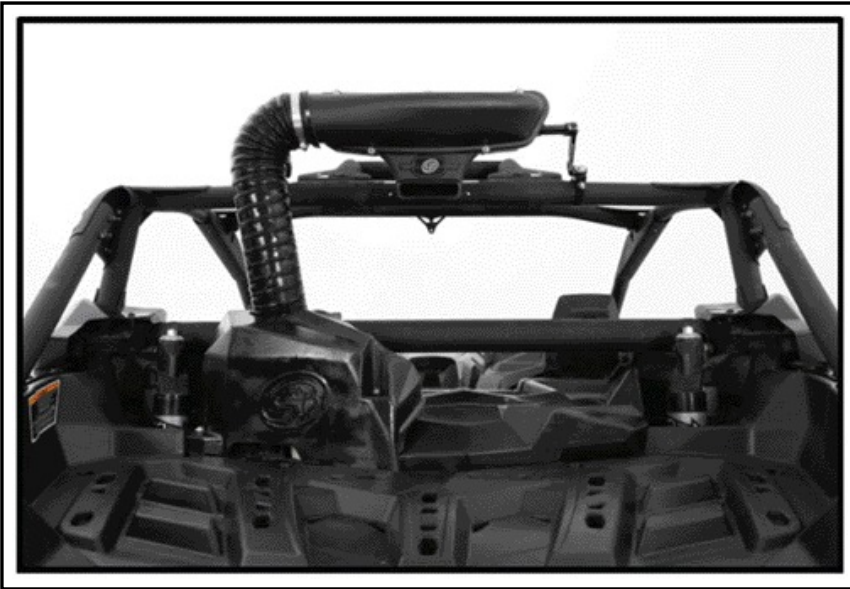
13. Install the Air Intake Cover [P4] from the "Preassembled Air Intake Cover". Make sure the prongs go into the grommets. Press down on the cover directly over the two prongs to make sure they are seated properly.



14. Determine where you would like to install the Particle Separator [P1] on the roll cage, making sure you have enough room to fit the clamps and Particle Separator on the roll cage without any interference. As shown in Figure 1-5 below, these are some of the most common positions. Planning ahead will save you time during the install. Our clamps are adaptable enough to work around most accessories you may already have installed on the roll cage.

The next Installation section has been broken up into two groups: "On Lower Bar" and "On Upper Bar", depending on the desired mounting location. Please proceed to your specific mounting instructions. Please note that the diameter of the "Lower Bar" and "Upper Bar" are different and require either 2.50" or 1.85" Clamp Straps [P13 or P12] specific to the size of the bar.

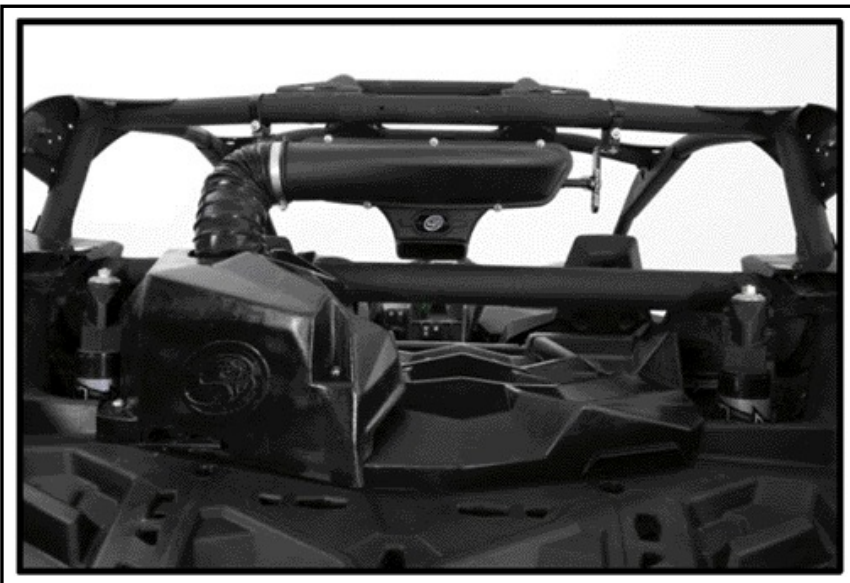
MOUNTING POSITIONS



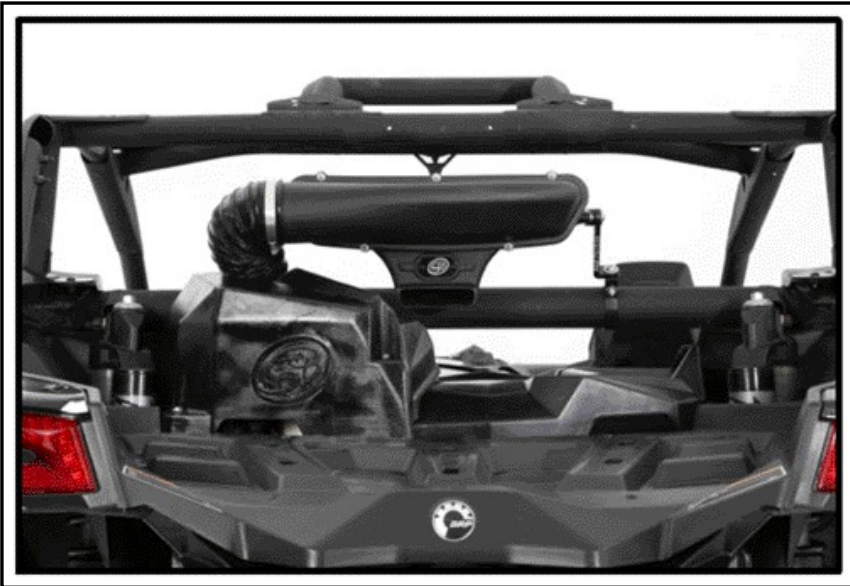
UPPER BAR - HIGH FIGURE 1



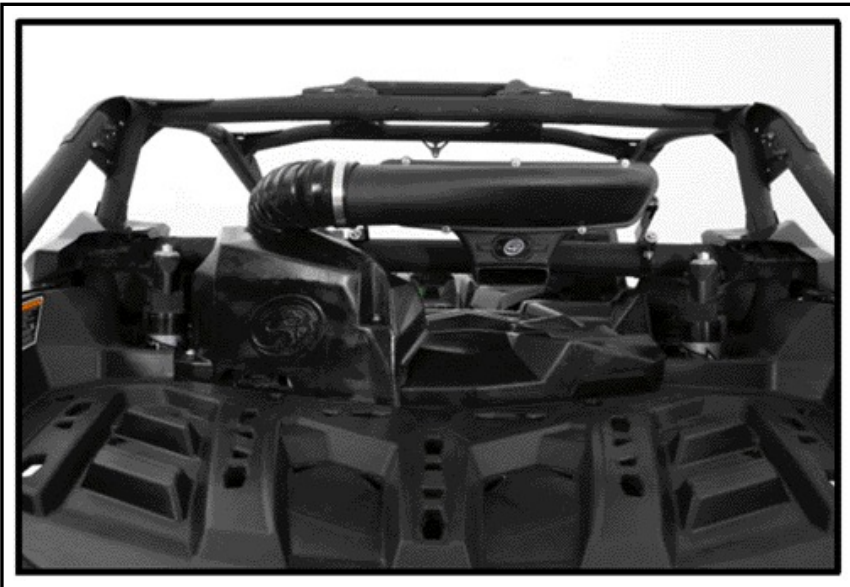
UPPER BAR - MIDDLE FIGURE 2



UPPER BAR - LOW FIGURE 3



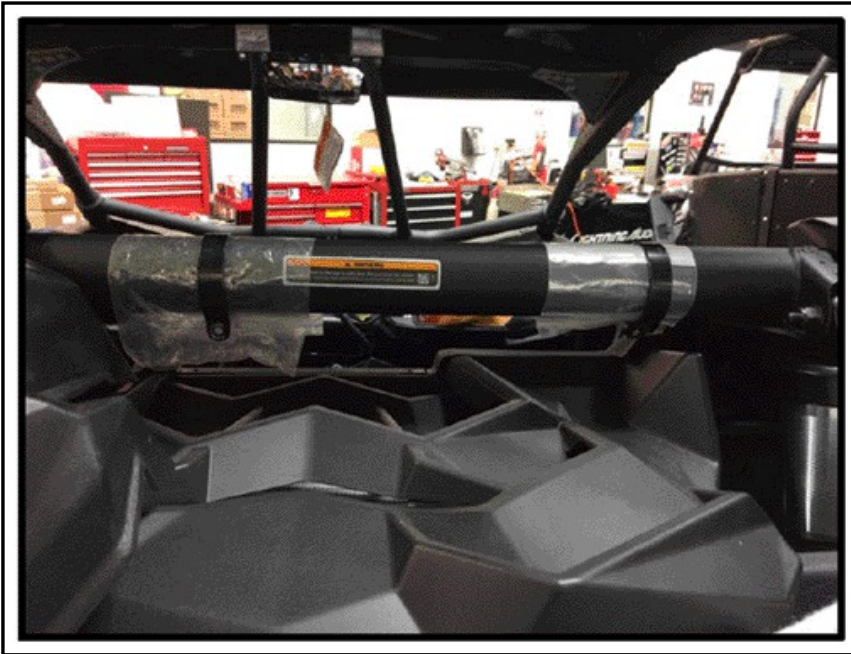
LOWER BAR – CENTERED FIGURE 4



LOWER BAR – ALIGNED RIGHT FIGURE 5

INSTALLATION (ON LOWER BAR)

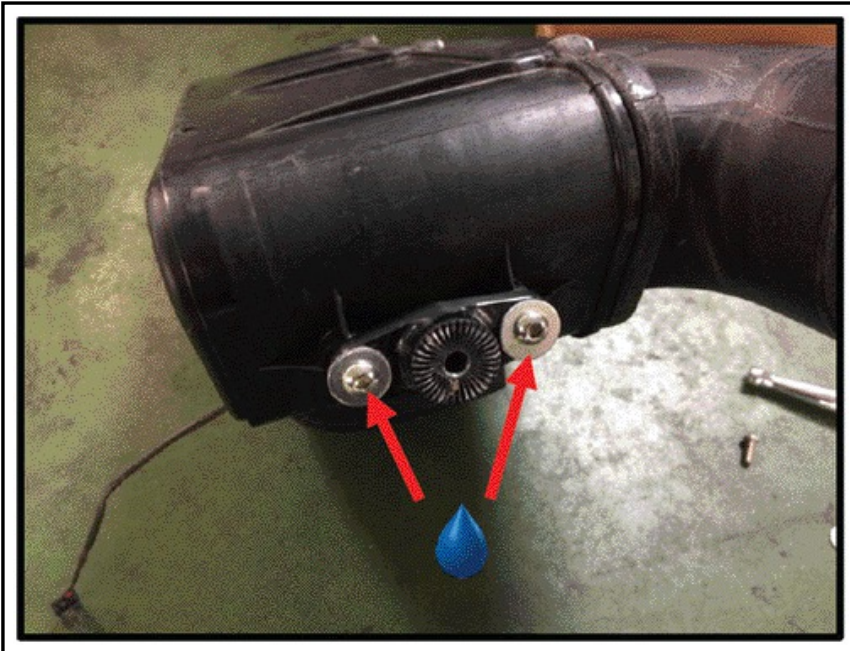
1. Install the two Clamp Strap(s) 2.50" [P13] onto the roll cage. Do not pull the ends of the straps open. Loosely wrap some plastic around the roll cage and push the straps onto the roll cage until they snap into place. Leave the plastic on the roll cage for now to prevent scratching the paint while you adjust the position of the Particle Separator.



2. Install the Clamp Pivot Body [P11] onto the Clamp Strap 2.50" [P13] with the supplied M6-1.0 x 50 Screw [P18], M6 Washer [P15], and M6 Locknut [P19] using a 4mm Hex Key or Hex Bit Socket [T1] and 10mm Wrench or Socket [T5]. Do not fully tighten the screws and locknuts. Leave the strap loose for final adjustments later in the install. Repeat for both clamps.

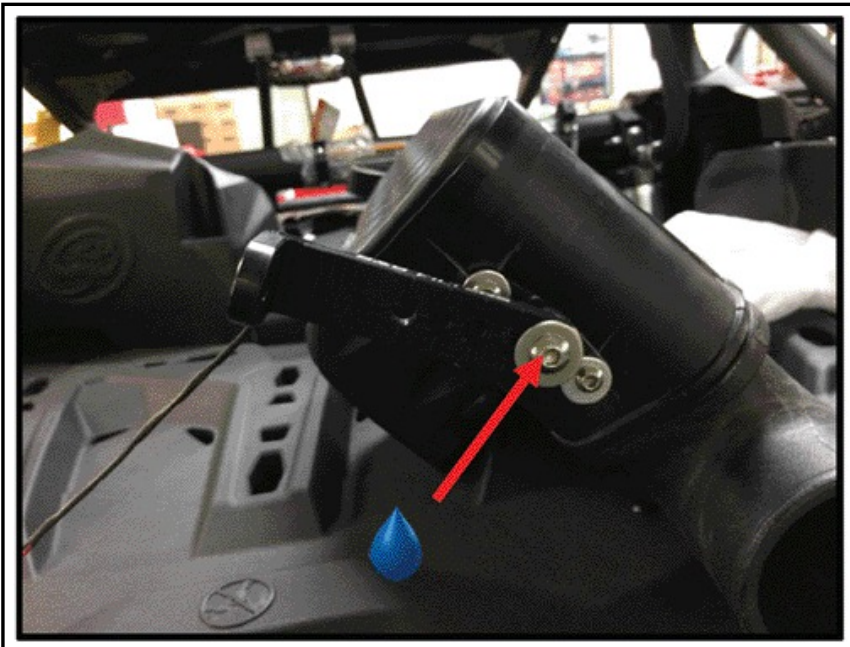


3. Install the Clamp Adapter [P9] on the mounting bosses of the Particle Separator [P1] with the supplied M6-1.0 x 18 Screw [P14] and M6 Washer [P15] with a 4mm Hex Key or Hex Bit Socket [T1]. Apply Threadlocker [P27] to the screw before tightening. Use a Torque Wrench [T11] to tighten to the torque specifications. Repeat this for both sides.



| TIGHTENING TORQUE | |
|--------------------------|-------------------------------|
| M6-1.0 x 18 Screw [P14] | 7.5 ± 1.0 N•m (66 ± 9 lbf•in) |

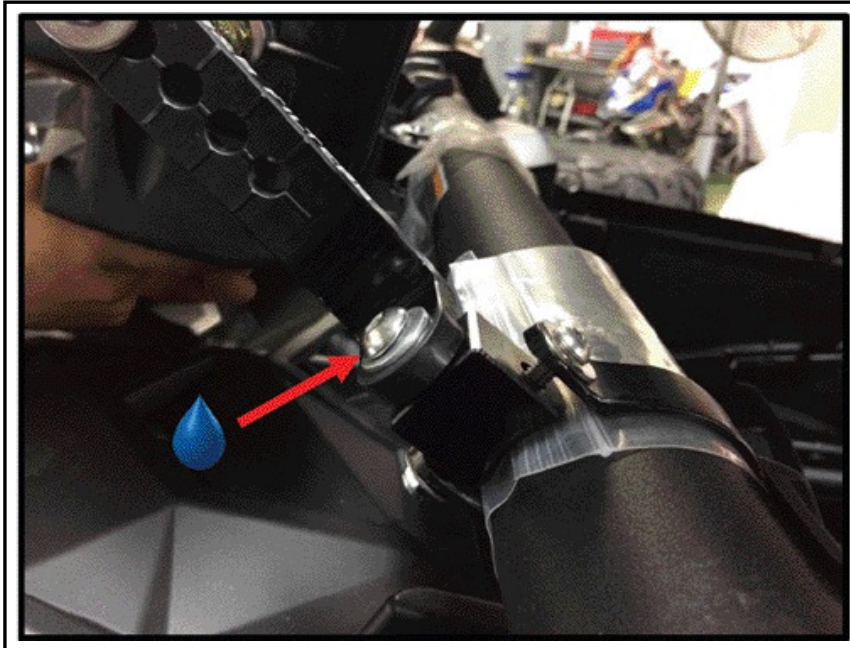
4. Determine the proper angle to mount the Clamp L-Bracket [P10] to the Clamp Adapter [P9] based on the desired location for the Particle Separator [P1]. Make sure the ribs in the Clamp L-Bracket are properly seated inside the grooves of the Clamp Adapter. Do not attempt to rotate these parts once assembled. They are designed to lock into place once seated. Once you're satisfied with the position of the Clamp LBracket, apply Threadlocker [P27] to the M8-1.25 x 25 Screw [P16], install the M8 Washer [P17], and tighten with a 5mm Hex Key or Hex Bit Socket [T2]. Use a Torque Wrench [T11] to tighten to the torque specifications. Repeat for the other side of the Particle Separator and make sure the L-Bracket on both sides are pointed in the same direction and are aligned with each other.



| TIGHTENING TORQUE | |
|--------------------------|----------------------------------|
| M8-1.25 x 25 Screw [P16] | 15.3 ± 1.7 N•m (135 ± 15 lbf•in) |

5. Install the Clamp L-Bracket [P10] onto the Clamp Pivot Body [P11] using M8-1.25 x 25 Screw [P16] and M8 Washer [P17]. Apply Threadlocker [P27] to the screw, install the M8 Washer, and tighten with a 5mm Hex Key or Hex Bit Socket [T2]. You may have to adjust the position of the Clamp Strap 2.50" [P13] and pivot body to align with the hole in the Clamp L-Bracket [P10]. Do this for both sides. Use a Torque Wrench [T11] to tighten to the

torque specifications. Having an extra pair of hands holding the Particle Separator [P1] to help align the mounting holes will make the install easier.



| TIGHTENING TORQUE | |
|--------------------------|----------------------------------|
| M8-1.25 x 25 Screw [P16] | 15.3 ± 1.7 N•m (135 ± 15 lbf•in) |

6. Verify that the Particle Separator [P1] is installed in the desired location and orientation. Once you are satisfied with the position, remove the plastic bag around the roll cage, fully tighten the M6-1.0 x 50 Screw [P18], M6 Washer [P15], and M6 Locknut [P19] using a 4mm Hex Key or Hex Bit Socket [T1] and 10mm Wrench or Socket [T5]. Use a Torque Wrench [T11] to tighten to the torque specifications. Do this for both sides.

| TIGHTENING TORQUE | |
|-------------------------|-------------------------------|
| M6-1.0 x 50 Screw [P18] | 7.5 ± 1.0 N•m (66 ± 9 lbf•in) |

7. Double check that all screws and locknuts are tight and that they are securely holding the Particle Separator [P1] assembly to the roll cage.

8. Insert one end of the Flexible Duct [P22] onto the Plenum [P3]. Do not install Hose Clamp #56 [P24] yet. Bring the other end towards the round clean air outlet of the Particle Separator [P1]. Note the amount of duct that needs to be cut. We recommend adding an extra 3" to the length of the duct needed. The duct can always be cut shorter if desired. Remove the duct from the Plenum [P3] and Particle Separator [P1].



9. Pierce the Flexible Duct [P22] using a Razor Blade [T8], centered between the two wire reinforcements. Cut all the way around, keeping the blade centered between the wire reinforcements the entire length of the cut. Use a Mini-Bolt or a Heavy Duty Wire Cutter [T9] to cut through the wire and duct. Use a pair of Scissors [T10] to finish the cut and to even out any jagged edges.



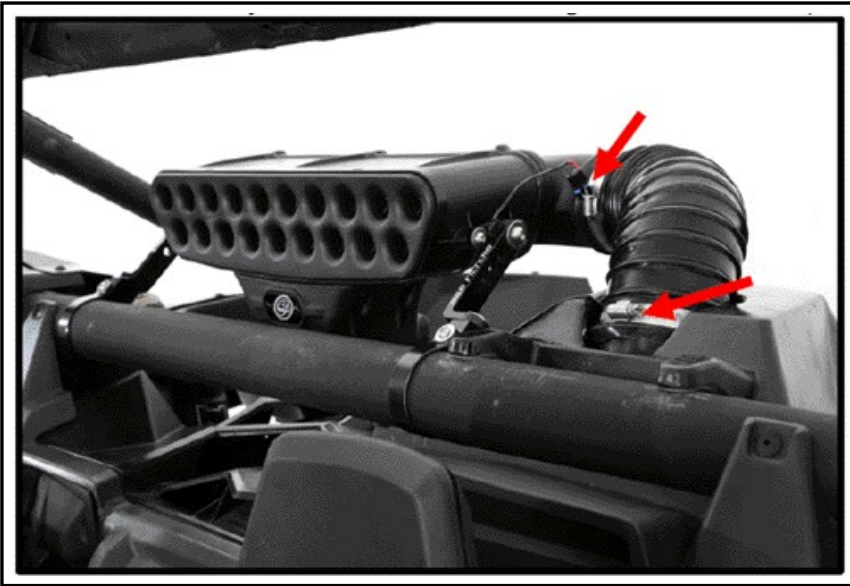
***REVISED BOM (PREVIOUS PARTS)**

1. Insert one end of the Flexible Duct [P22] fully into the Flex Duct End Cuff [P23]. Repeat for the other end of the flexible duct.



2. Install a Hose Clamp #56 [P24] over the Flex Duct End Cuff [P23] then install onto the Plenum [P3]. Tighten Hose Clamp #56 with a 5/16" Nut Driver or Flat Head Screw Driver [T7]. Make sure the hose clamp is seated in the groove of the Flex Duct End Cuff.

3. Install a Hose Clamp #56 [P24] on the other end of the Flex Duct End Cuff [P23] then install onto the plenum on the Particle Separator [P1]. Tighten Hose Clamp #56 with a 5/16" Nut Driver or Flat Head Screw Driver [T7]. Make sure the hose clamp is seated in the groove of the Flex Duct End Cuff.



4. Go to Step 10.

***REVISED BOM (UPDATED PARTS)**

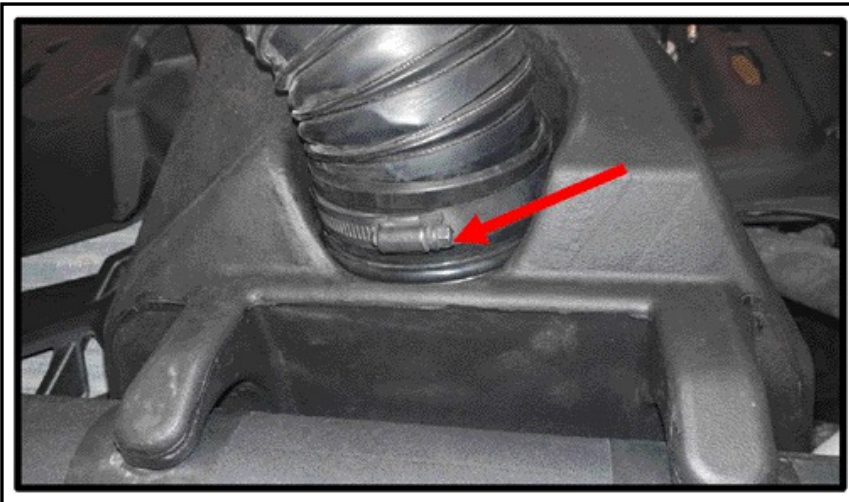
1. Insert one end of the Flexible Duct [P22] fully into the Flex Duct End Cuff [P29] with a Hose Clamp #56 [P24]. Make sure the hose clamp is seated in the groove of the Flex Duct End Cuff. Leave the hose clamp loose.



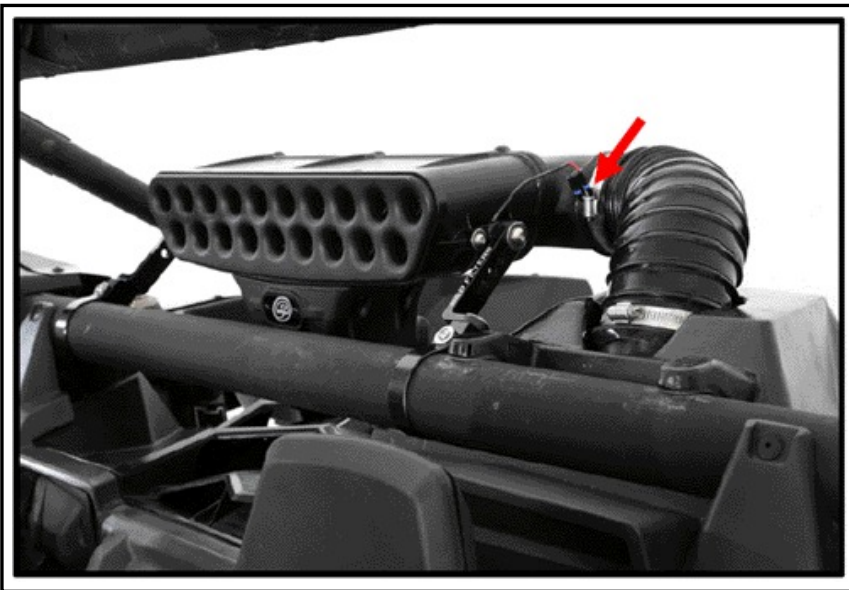
2. Insert the other end of the Flexible Duct [P22] fully into the Flex Duct End Cuff with Seal [P30] with a Hose Clamp #56 [P24]. Make sure the hose clamp is seated in the groove of the Flex Duct End Cuff. Leave the hose clamp loose.



3. Install the onto the Flexible Duct [P22] with the Flex Duct End Cuff with Seal [P30] onto Plenum [P3]. Tighten Hose Clamp #56 with a 5/16" Nut Driver or Flat Head Screw Driver [T7]. Make sure the hose clamp is seated in the groove of the Flex Duct End Cuff.



4. Install the Flex Duct End Cuff [P23] with the Flex Duct End Cuff [P29] onto the plenum of the Particle Separator [P1]. Tighten Hose Clamp #56 with a 5/16" Nut Driver or Flat Head Screw Driver [T7]. Double check the Flexible Duct [P22] to make sure it is securely attached at both ends. Tighten the hose clamps if necessary.



5. Go to Step 10.

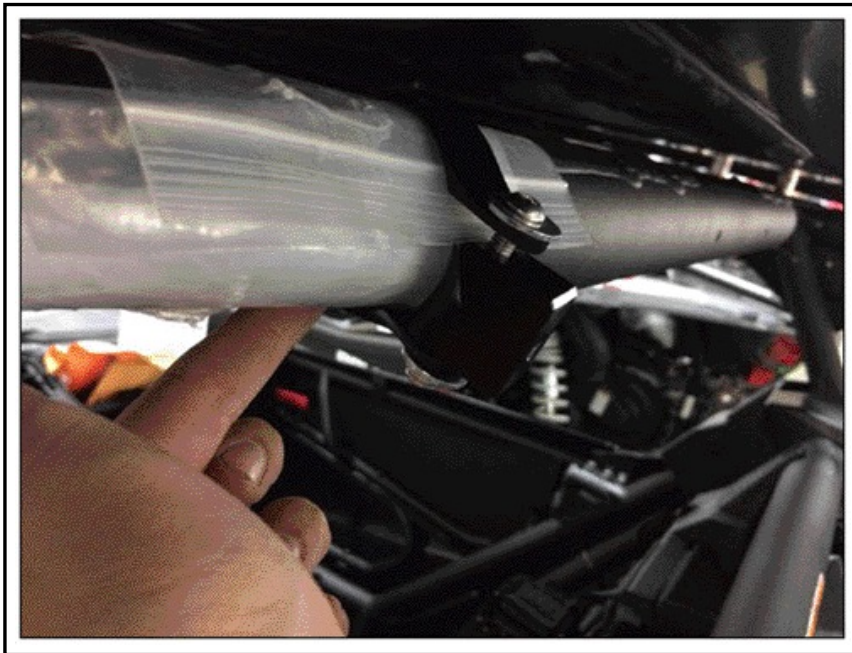
10. If necessary, use the provided Velcro Strap [P25] to secure the Duct [P22] to the roll cage.

11. Connect the Fan Connector from the Universal Wire Harness [P20] to the fan wire harness on the Particle Separator [P1]. Use Cable Tie [P21] to secure any loose wires to the cage.

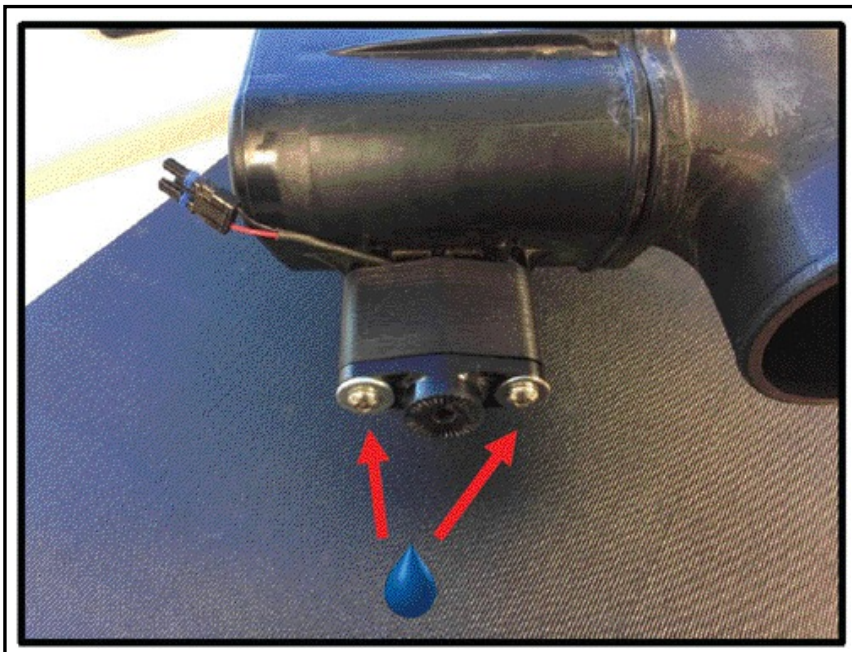
12. Group together any excess wires and Cable Tie [P21] them together. Use another cable tie and secure the bundle away from any exhaust components or moving parts that could potentially damage the harness.
13. Slide and tilt the passenger seat back to your desired position.
14. Make sure the connectors are all plugged in and secure. Turn the ignition on and make sure air is blowing out the exhaust. If the exhaust fan does not turn on, double check your electrical connections. When you turn the ignition off, the fan may stay on for several seconds, and is normal. Your installation is now complete.

INSTALLATION (ON UPPER BAR)

1. Install the two Clamp Strap(s) 1.85" [P12] onto the roll cage. Do not pull the ends of the straps open. Loosely wrap some plastic around the roll cage and push the straps onto the roll cage until they snap into place. Leave the plastic on the roll cage for now to prevent scratching the paint while you adjust the position of the Particle Separator.
2. Install the Clamp Pivot Body [P11] onto the Clamp Strap 1.85" [P12] with the supplied M6-1.0 x 50 Screw [P18], M6 Washer [P15], and M6 Locknut [P19] using a 4mm Hex Key or Hex Bit Socket [T1] and 10mm Wrench or Socket [T5]. Do not fully tighten the screws and locknuts. Leave the strap loose for final adjustments later in the install. Repeat for both clamps.

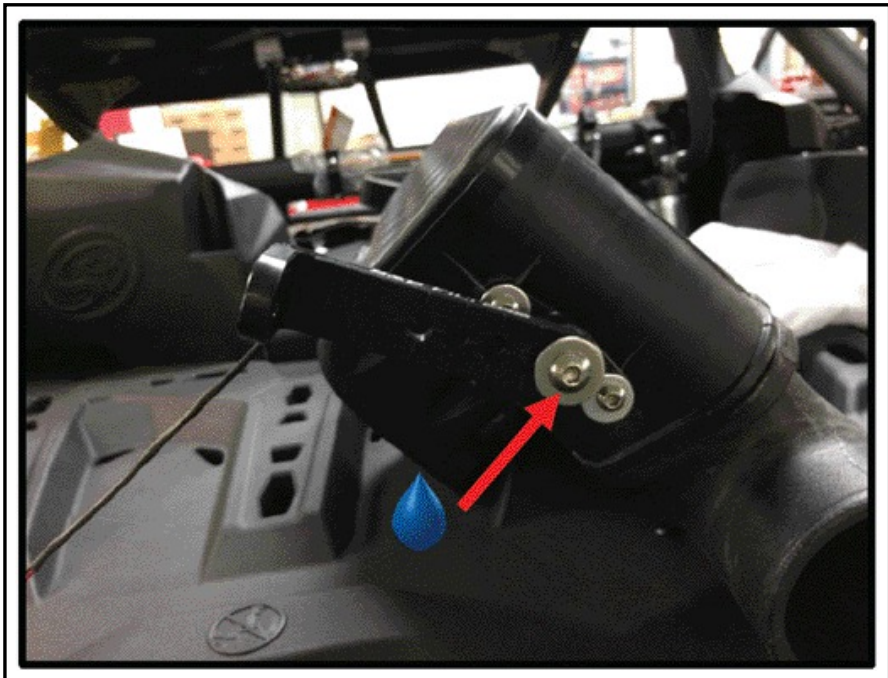


3. Install the Clamp Adapter [P9] and Mounting Spacer [P7] on the mounting bosses of the Particle Separator [P1] with the supplied M6-1.0 x 60 Screw [P8] and M6 Washer [P15] with a 4mm Hex Key or Hex Bit Socket [T1]. Apply Threadlocker [P27] to the screw before tightening. Use a Torque Wrench [T11] to tighten to the torque specifications. Repeat this for both sides.



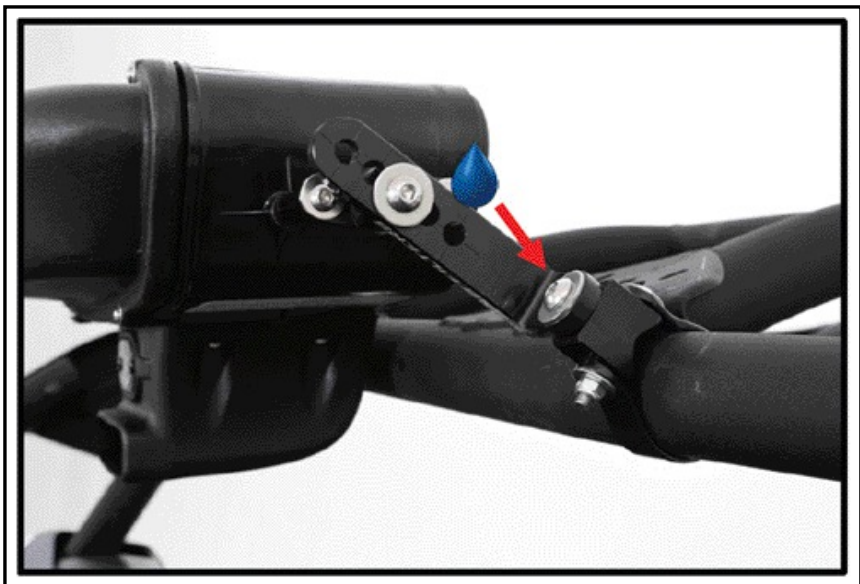
| TIGHTENING TORQUE | |
|------------------------|-------------------------------|
| M6-1.0 x 60 Screw [P8] | 7.5 ± 1.0 N•m (66 ± 9 lbf•in) |

4. Determine the proper angle to mount the Clamp L-Bracket [P10] to the Clamp Adapter [P9] based on the desired location for the Particle Separator [P1]. Make sure the ribs in the Clamp L-Bracket are properly seated inside the grooves of the Clamp Adapter. Do not attempt to rotate these parts once assembled. They are designed to lock into place once seated. Once you're satisfied with the position of the Clamp LBracket, apply Threadlocker [P27] to the M8-1.25 x 25 Screw [P16], install the M8 Washer [P17], and tighten with a 5mm Hex Key or Hex Bit Socket [T2]. Use a Torque Wrench [T11] to tighten to the torque specifications. Repeat for the other side of the Particle Separator and make sure the L-Bracket on both sides are pointed in the same direction and are aligned with each other.



| TIGHTENING TORQUE | |
|--------------------------|----------------------------------|
| M8-1.25 x 25 Screw [P16] | 15.3 ± 1.7 N•m (135 ± 15 lbf•in) |

5. Install the Clamp L-Bracket [P10] onto the Clamp Pivot Body [P11] using M8-1.25 x 25 Screw [P16] and M8 Washer [P17]. Apply Threadlocker [P27] to the screw, install the M8 Washer, and tighten with a 5mm Hex Key or Hex Bit Socket [T2]. You may have to adjust the position of the Clamp Strap 1.85" [P12] and pivot body to align with the hole in the Clamp L-Bracket [P10]. Do this for both sides. Use a Torque Wrench [T11] to tighten to the torque specifications. Having an extra pair of hands holding the Particle Separator [P1] to help align the mounting holes will make the install easier.



| | |
|--------------------------|----------------------------------|
| TIGHTENING TORQUE | |
| M8-1.25 x 25 Screw [P16] | 15.3 ± 1.7 N•m (135 ± 15 lbf•in) |

6. Verify that the Particle Separator [P1] is installed in the desired location and orientation. Once you are satisfied with the position, remove the plastic bag around the roll cage, fully tighten the M6-1.0 x 50 Screw [P18], M6 Washer [P15], and M6 Locknut [P19] using a 4mm Hex Key or Hex Bit Socket [T1] and 10mm Wrench or Socket [T5]. Use a Torque Wrench [T11] to tighten to the torque specifications. Do this for both sides.

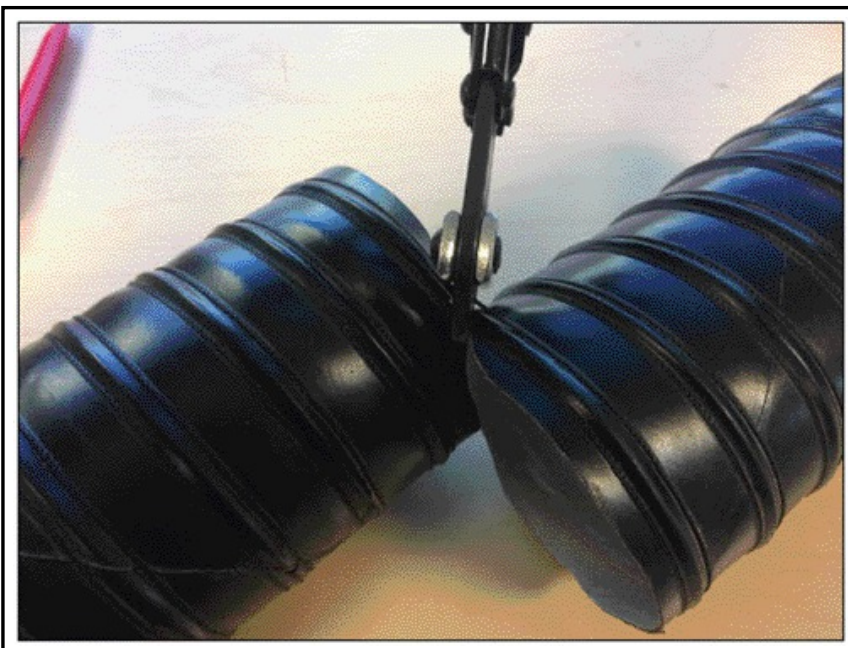
| | |
|--------------------------|-------------------------------|
| TIGHTENING TORQUE | |
| M6-1.0 x 50 Screw [P18] | 7.5 ± 1.0 N•m (66 ± 9 lbf•in) |

7. Double check that all screws and locknuts are tight and that they are securely holding the Particle Separator [P1] assembly to the roll cage.

8. Insert one end of the Flexible Duct [P22] onto the Plenum [P3]. Do not install Hose Clamp #56 [P24] yet. Bring the other end towards the round clean air outlet of the Particle Separator [P1]. Note the amount of duct that needs to be cut. We recommend adding an extra 3" to the length of the duct needed. The duct can always be cut shorter if desired. Remove the duct from the Plenum [P3] and Particle Separator [P1]



9. Pierce the Flexible Duct [P22] using a Razor Blade [T8], centered between the two wire reinforcements. Cut all the way around, keeping the blade centered between the wire reinforcements the entire length of the cut. Use a Mini-Bolt or a Heavy Duty Wire Cutter [T9] to cut through the wire and duct. Use a pair of Scissors [T10] to finish the cut and to even out any jagged edges.



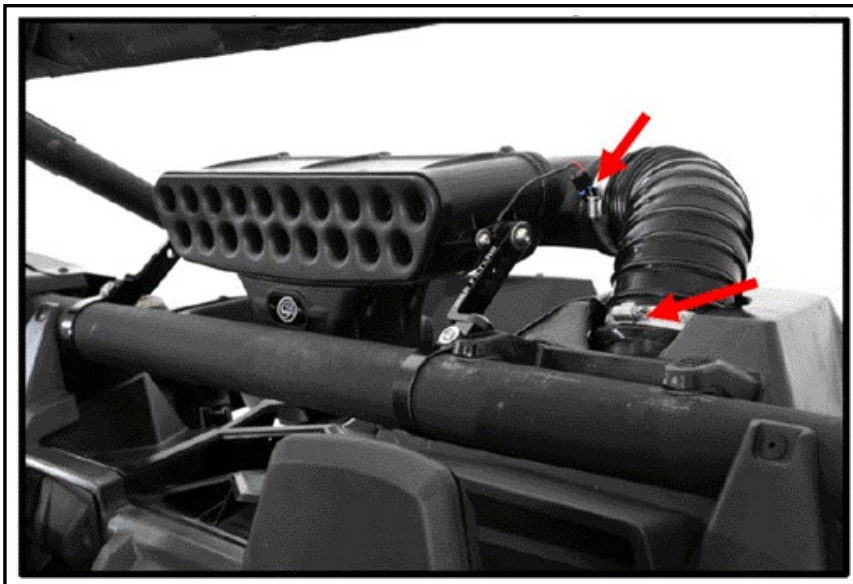
*REVISED BOM (PREVIOUS PARTS)

1. Insert one end of the Flexible Duct [P22] fully into the Flex Duct End Cuff [P23]. Repeat for the other end of the flexible duct.



2. Install a Hose Clamp #56 [P24] over the Flex Duct End Cuff [P23] then install onto the Plenum [P3]. Tighten Hose Clamp #56 with a 5/16" Nut Driver or Flat Head Screw Driver [T7]. Make sure the hose clamp is seated in the groove of the Flex Duct End Cuff.

3. Install a Hose Clamp #56 [P24] on the other end of the Flex Duct End Cuff [P23] then install onto the plenum on the Particle Separator [P1]. Tighten Hose Clamp #56 with a 5/16" Nut Driver or Flat Head Screw Driver [T7]. Make sure the hose clamp is seated in the groove of the Flex Duct End Cuff. Double check to make sure the Flexible Duct [P22] is securely attached at both ends. Tighten the hose clamps if necessary.



4. Go to Step 10.

*REVISED BOM (UPDATED PARTS)

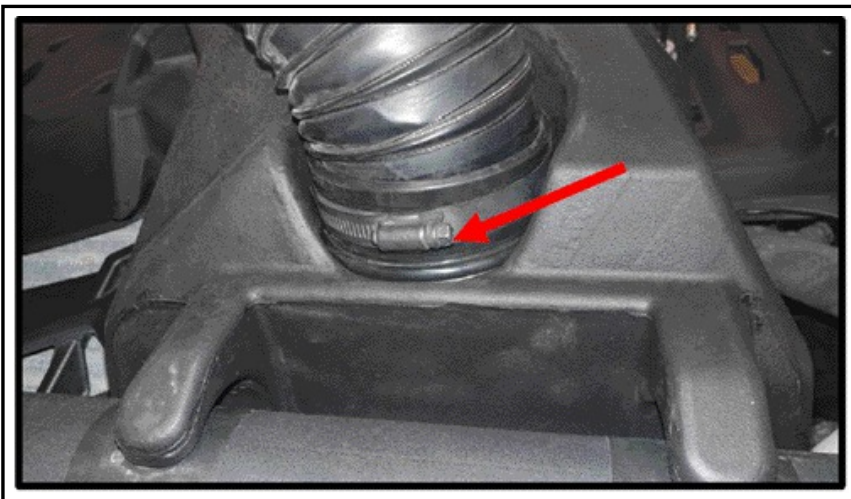
1. Insert one end of the Flexible Duct [P22] fully into the Flex Duct End Cuff [P29] with a Hose Clamp #56 [P24]. Make sure the hose clamp is seated in the groove of the Flex Duct End Cuff. Leave the hose clamp loose.



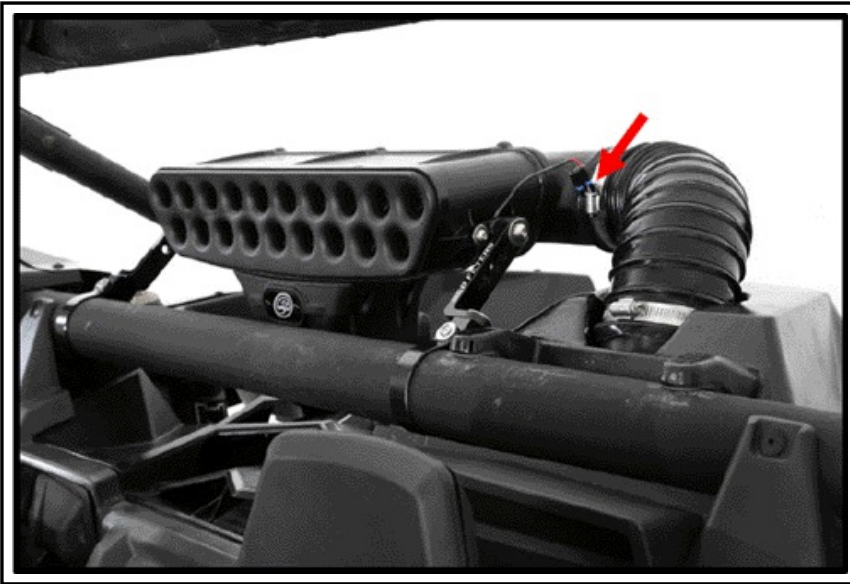
2. Insert the other end of the Flexible Duct [P22] fully into the Flex Duct End Cuff with Seal [P30] with a Hose Clamp #56 [P24]. Make sure the hose clamp is seated in the groove of the Flex Duct End Cuff. Leave the hose clamp loose.



3. Install the onto the Flexible Duct [P22] with the Flex Duct End Cuff with Seal [P30] onto Plenum [P3]. Tighten Hose Clamp #56 with a 5/16" Nut Driver or Flat Head Screw Driver [T7]. Make sure the hose clamp is seated in the groove of the Flex Duct End Cuff.



4. Install the Flex Duct End Cuff [P23] with the Flex Duct End Cuff [P29] onto the plenum of the Particle Separator [P1]. Tighten Hose Clamp #56 with a 5/16" Nut Driver or Flat Head Screw Driver [T7]. Double check the Flexible Duct [P22] to make sure it is securely attached at both ends. Tighten the hose clamps if necessary.



5. Go to Step 10.

10. If necessary, use the provided Velcro Strap [P25] to secure the Duct [P22] to the roll cage.

11. Connect the Fan Connector from the Universal Wire Harness [P20] to the fan wire harness on the Particle Separator [P1]. Use Cable Tie [P21] to secure any loose wires to the cage.

12. Group together any excess wires and Cable Tie [P21] them together. Use another cable tie and secure the bundle away from any exhaust components or moving parts that could potentially damage the harness.

13. Сдвиньте и наклоните сиденье пассажира в нужное положение.

14. Убедитесь, что все разъемы подключены и защищены. Включите зажигание и убедитесь, что воздух выдувает выхлоп. Если вытяжной вентилятор не включается, проверьте свои электрические соединения. Когда вы выключаете зажигание, вентилятор может оставаться на несколько секунд, и это нормально. Ваша установка завершена.